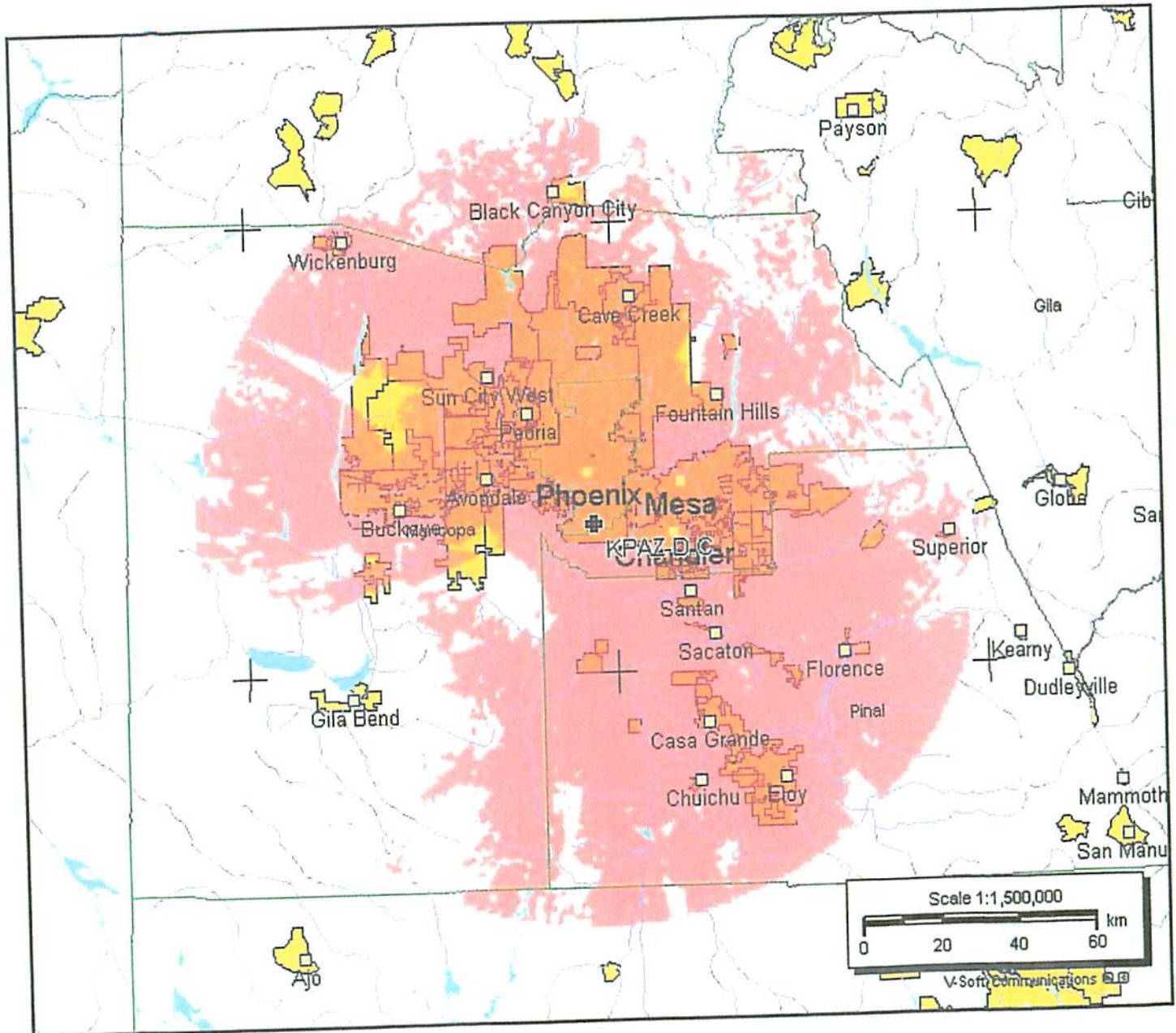


KPAZ-D.C

BPCDT19990414KH
Latitude: 33-20-02.50 N
Longitude: 112-03-42 W
ERP: 500.00 kW
EIRP: 820.00 kW
Channel: 20
Frequency: 509.0 MHz
AMSL Height: 844.0 m
Elevation: 733.15 m
HAAT: 489.0 m
Horiz. Pattern: Omni
Vert. Pattern: Yes
Elec Tilt: 1.25
Prop Model: Longley/Rice
Climate: Cont temperate
Conductivity: 0.0050
Dielec Const: 15.0
Refractivity: 311.0
Receiver Ht AG: 10.0 m
Receiver Gain: 0 dB
Time Variability: 90.0%
Sit. Variability: 50.0%
ITM Mode: Broadcast

41.0 dBu



Scale 1:1,500,000
0 20 40 60 km
V-Soft Communications